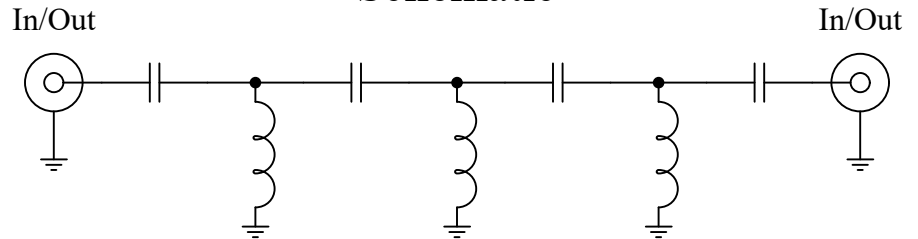


High Pass Filter
50Ω SMA
500 MHz 7th Order
Part Number: CHPFL-0500



Schematic



Features:

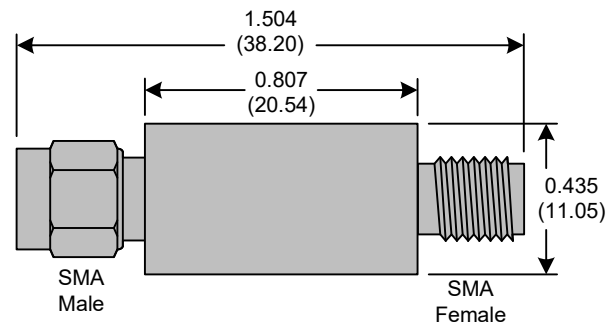
- 7th Order Butterworth Response
- 50Ω SMA Connectors

Applications:

- Test Equipment
- Lab Use

Maximum Ratings:

- +36dBm (4 Watts)
- Operating Temperature: -40°C to 85°C
- Storage Temperature: -55°C to 100°C



Crystek's line of High Pass Filters are designed in a rugged SMA housing. This filter line has excellent out-of-band rejection. Designed for Test Equipment and General Lab Use.

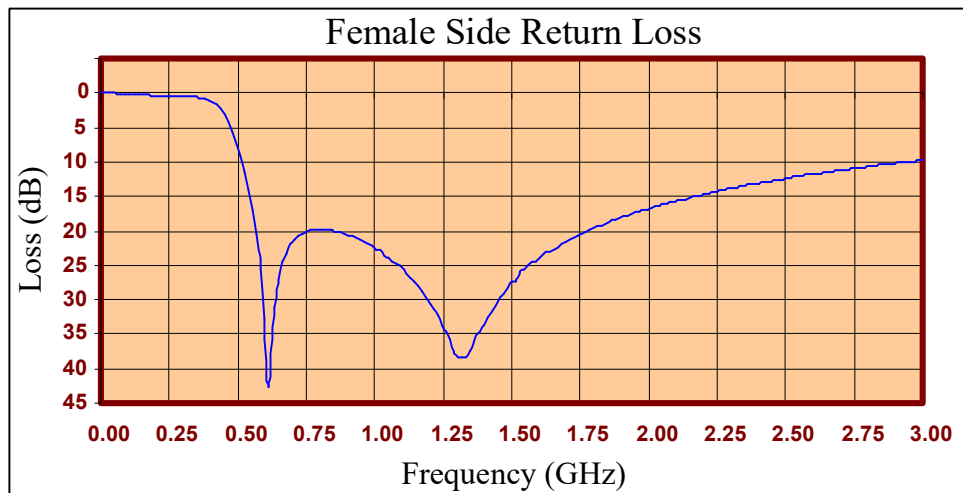
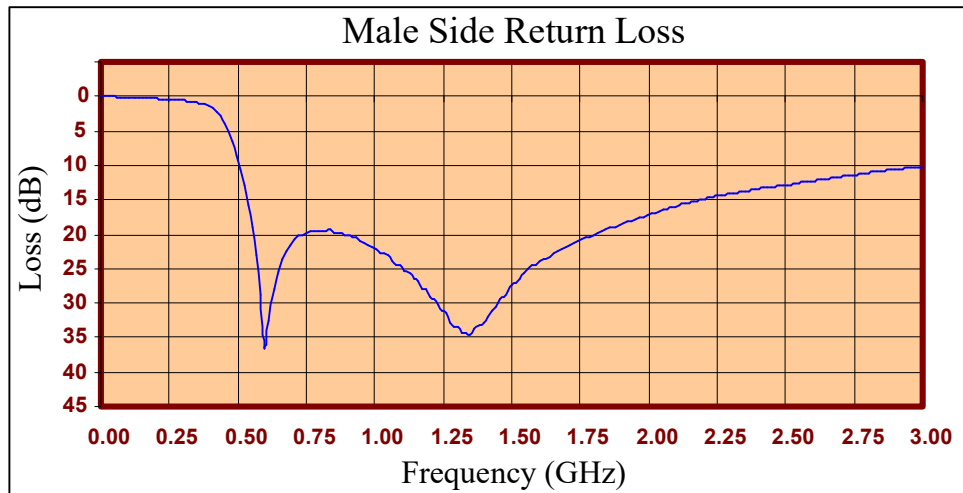
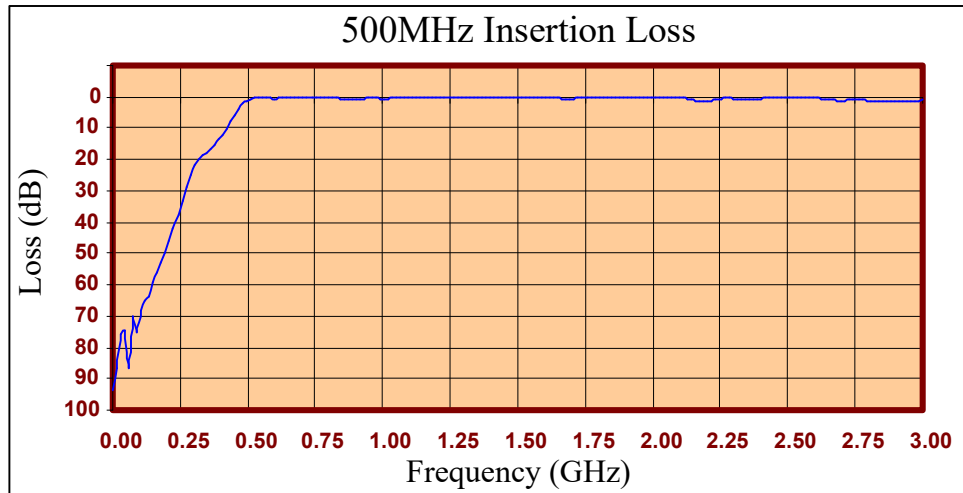
Product Control:

Crystek Part Number:	CHPFL-0500	Release Date:	13-Apr-2026
Revision Level:	F	Responsible:	K. Piotrowicz

High Pass Filter

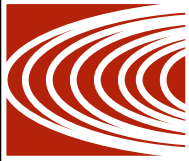
50Ω SMA

500 MHz 7th Order



Product Control:

Crystek Part Number:	CHPFL-0500	Release Date:	13-Apr-2026
Revision Level:	F	Responsible:	K. Piotrowicz



High Pass Filter
 50Ω SMA
 500 MHz 7th Order

FREQ (MHz)	INSERTION LOSS (dB)	Male Return Loss (dB)	Female Return Loss (dB)
0.3	112.15	0.00	0.00
15.3	96.62	0.01	0.01
30.3	95.24	0.02	0.01
45.3	97.99	0.02	0.03
60.3	85.58	0.06	0.08
75.3	82.62	0.06	0.09
90.3	75.25	0.08	0.08
105	69.15	0.09	0.11
120	66.00	0.13	0.16
135	64.64	0.21	0.20
150	62.93	0.21	0.26
165	59.84	0.31	0.33
180	55.63	0.31	0.35
195	50.32	0.34	0.36
210	44.54	0.35	0.36
225	40.93	0.38	0.37
240	39.67	0.42	0.41
255	38.15	0.47	0.45
270	35.55	0.52	0.48
285	31.85	0.58	0.51
300	27.12	0.62	0.54
330	19.31	0.73	0.60
405	9.58	1.72	1.34
450	5.44	3.88	3.18
510	0.81	10.62	9.23
585	0.73	28.93	25.35
705	0.29	20.71	21.33
810	0.19	19.67	19.92
900	0.55	20.25	20.69
1005	0.38	22.15	22.87
1245	0.28	31.09	33.85
1500	0.13	27.51	27.36
1755	0.00	20.75	20.45
1995	0.31	17.24	16.86
2250	0.83	14.51	14.28
2505	0.80	12.90	12.38
2745	1.14	11.43	10.97
3000	1.51	10.21	9.77

Product Control:

Crystek Part Number:	CHPFL-0500	Release Date:	13-Apr-2026
Revision Level:	F	Responsible:	K. Piotrowicz

Crystek Corporation reserves the right to make changes to its products and/or information contained herein without notice. No liability is assumed as a result of its use or application.

