

High Pass Filter

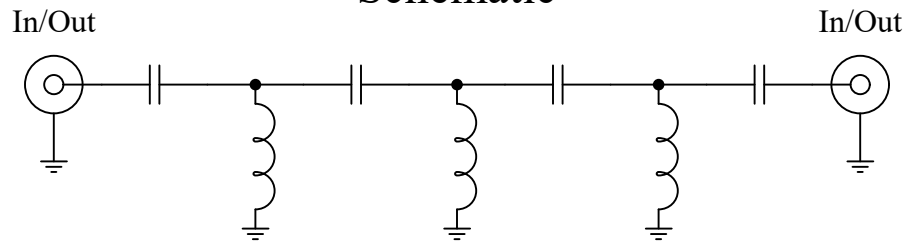
50Ω SMA

1600 MHz 7th Order

Part Number: CHPFL-1600



Schematic



Features:

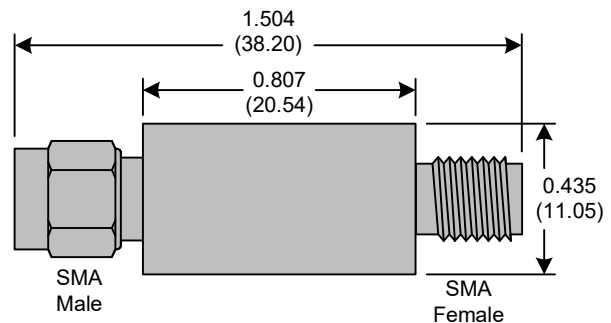
- 7th Order Butterworth Response
- 50Ω SMA Connectors

Applications:

- Test Equipment
- Lab Use

Maximum Ratings:

- +36dBm (4 Watts)
- Operating Temperature: -40°C to 85°C
- Storage Temperature: -55°C to 100°C



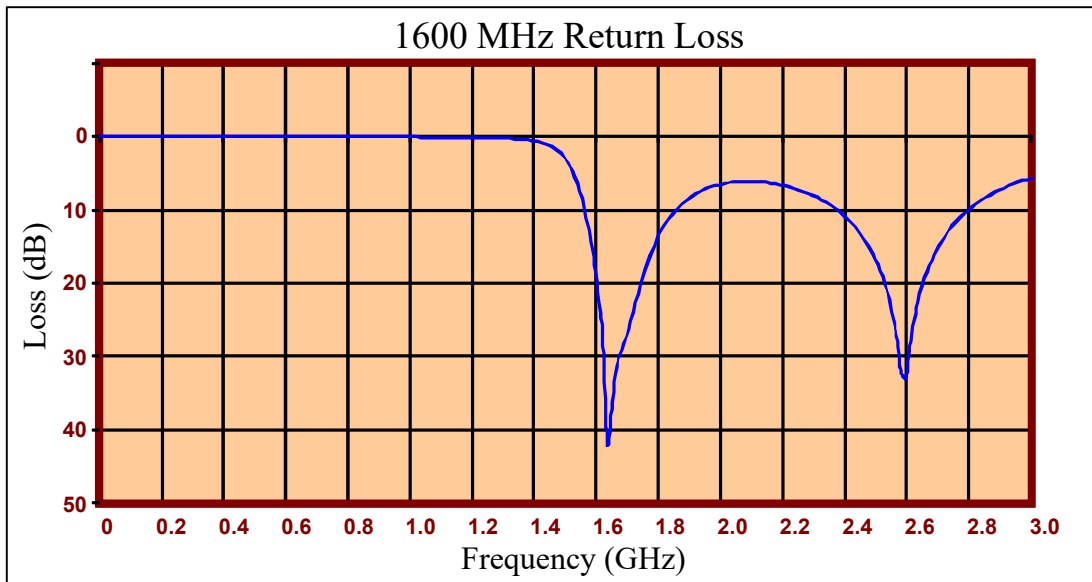
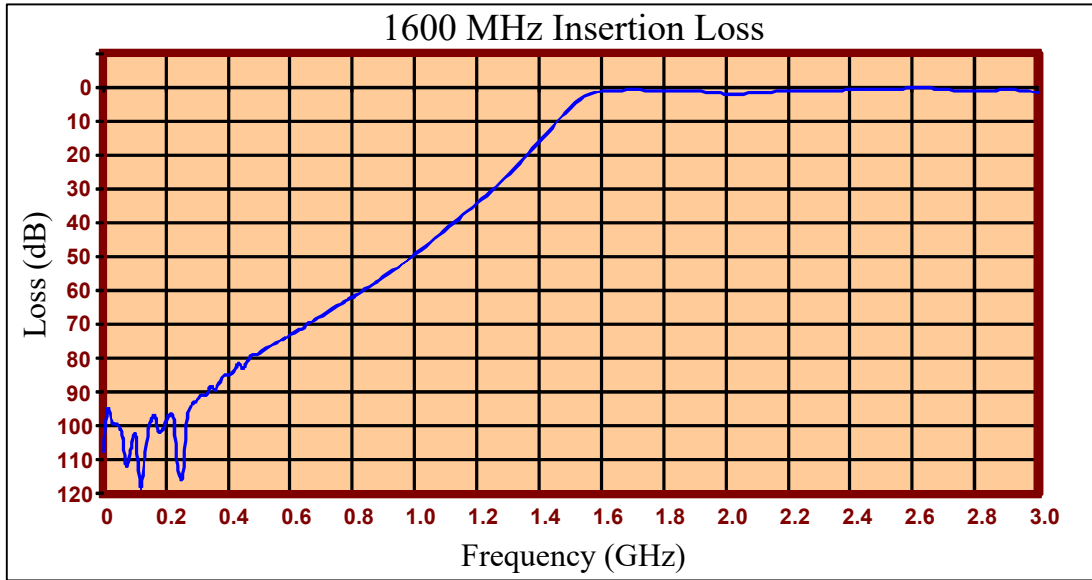
Crystek's line of High Pass Filters are designed in a rugged SMA housing. This filter line has excellent out-of-band rejection. Designed for Test Equipment and General Lab Use.

Product Control:

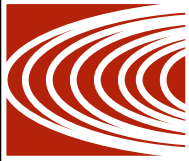
Crystek Part Number:	CHPFL-1600	Release Date:	16-Apr-2026
Revision Level:	B	Responsible:	K. Piotrowicz



High Pass Filter
 50Ω SMA
 1600 MHz 7th Order



Product Control:			
Crystek Part Number:	CHPFL-1600	Release Date:	16-Apr-2026
Revision Level:	B	Responsible:	K. Piotrowicz



High Pass Filter
 50Ω SMA
 1600 MHz 7th Order

FREQ (MHz)	INSERTION LOSS (dB)	RETURN LOSS (dB)
0.3	107.444	0.000
15.3	94.888	0.000
30.3	98.984	0.000
45.3	99.427	-0.001
60.3	101.474	-0.001
75.3	111.606	0.000
90.3	106.306	0.000
105	102.612	-0.001
120	117.932	-0.001
135	107.612	-0.001
150	99.209	-0.001
165	96.954	-0.002
180	101.878	-0.001
195	100.058	0.000
210	96.810	0.000
225	96.886	0.000
240	113.186	0.000
255	115.342	0.000
270	97.678	0.000
285	93.600	0.000
300	92.570	0.000
330	90.986	0.001
405	84.944	0.002
450	82.996	0.004
510	77.782	0.006
585	74.090	0.006
705	67.232	0.018
810	61.448	0.036
1005	49.099	0.080
1245	30.674	0.190
1500	6.086	3.058
1635	1.015	41.797
1755	0.920	18.148
2025	2.005	6.285
2250	1.309	7.232
2595	0.353	32.930
2745	1.035	12.195
3000	1.576	5.654

Product Control:				Crystek Corporation reserves the right to make changes to its products and/or information contained herein without notice. No liability is assumed as a result of its use or application.	
Crystek Part Number:	CHPFL-1600	Release Date:	16-Apr-2026		
Revision Level:	B	Responsible:	K. Piotrowicz	Page 3 of 3	