

Temperature Compensated Voltage Controlled Crystal Oscillator

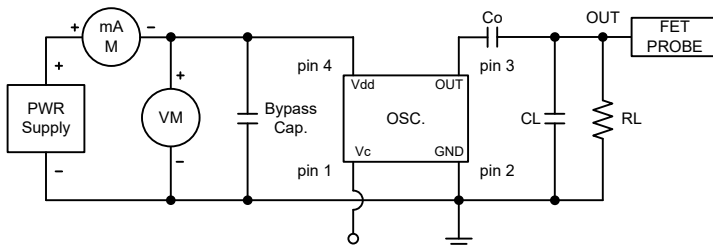
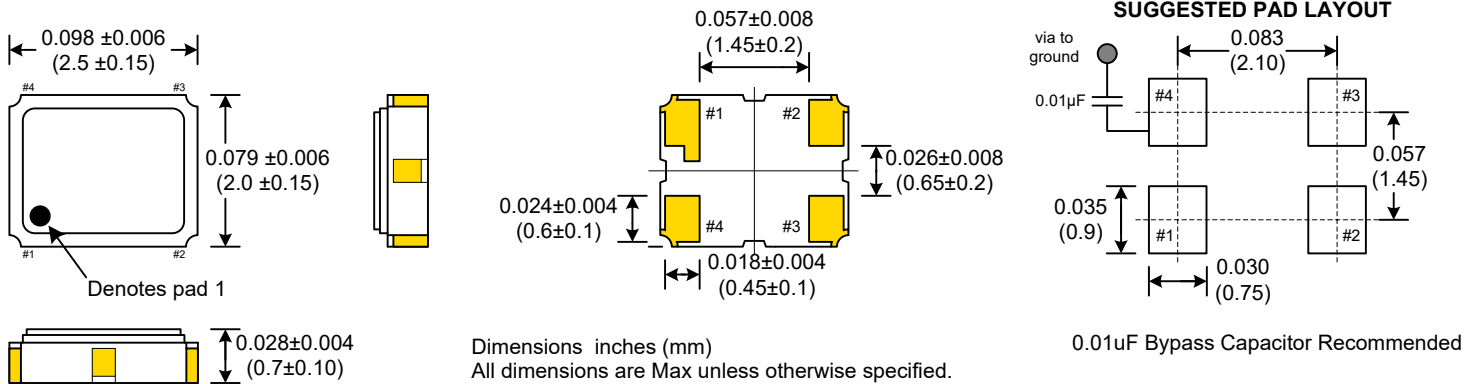
CVT20 Model 2.0x2.5 mm SMD, 2.8V, Clipped Sine

Designed to meet today's requirements for portable applications. Temperature compensation is accomplished through digital technology. Applications include GSM, GPRS, 3G, CDMA, W-CDMA.

Frequency:	19.200 MHz or 26.000MHz
Frequency Stability:	±2.5ppm Max
Temperature Range:	
Operating:	-30°C to 75°C
Storage:	-40°C to 85°C
Input Voltage:	2.8V ±5%
Input Current:	1.8mA Max
Control Voltage Range:	1.4V ±1.0V
Frequency Control Range:	±9ppm to ±15ppm
Output:	Clipped Sine
Output Level:	0.8Vp-p Min
Load:	10kΩ/10pF
Aging:	±1ppm Max per year

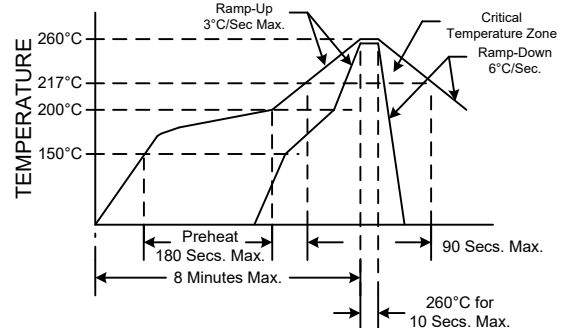
Mechanical:	
Shock:	MIL-STD-883, Method 2002, Condition B
Solderability:	MIL-STD-883, Method 2003
Vibration:	MIL-STD-883, Method 2007, Condition A
Solvent Resistance:	MIL-STD-202, Method 215
Resistance to Soldering Heat:	MIL-STD-202, Method 210, Condition I or J
Environmental:	
Thermal Shock:	MIL-STD-883, Method 1011, Condition A
Moisture Resistance:	MIL-STD-883, Method 1004

For Additional Technical Information
please contact Crystek at sales@crystek.com



PIN	Function
1	Voltage Control
2	GND
3	OUT
4	VDD

RECOMMENDED REFLOW SOLDERING PROFILE



Rev: B
Date: 19-Jan-2017
Page 1 of 1