

# High Pass Filter

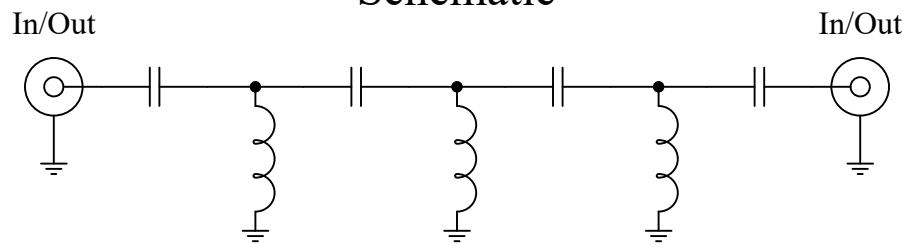
## 50Ω SMA

### 7<sup>th</sup> Order

Part Number: CHPFL-0225



### Schematic



### Features:

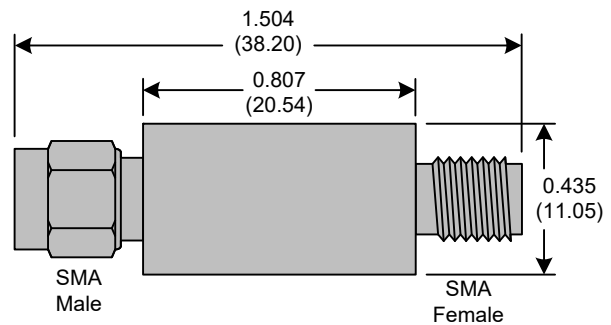
- 7<sup>th</sup> Order Butterworth Response
- 50Ω SMA Connectors

### Applications:

- Test Equipment
- Lab Use

### Maximum Ratings:

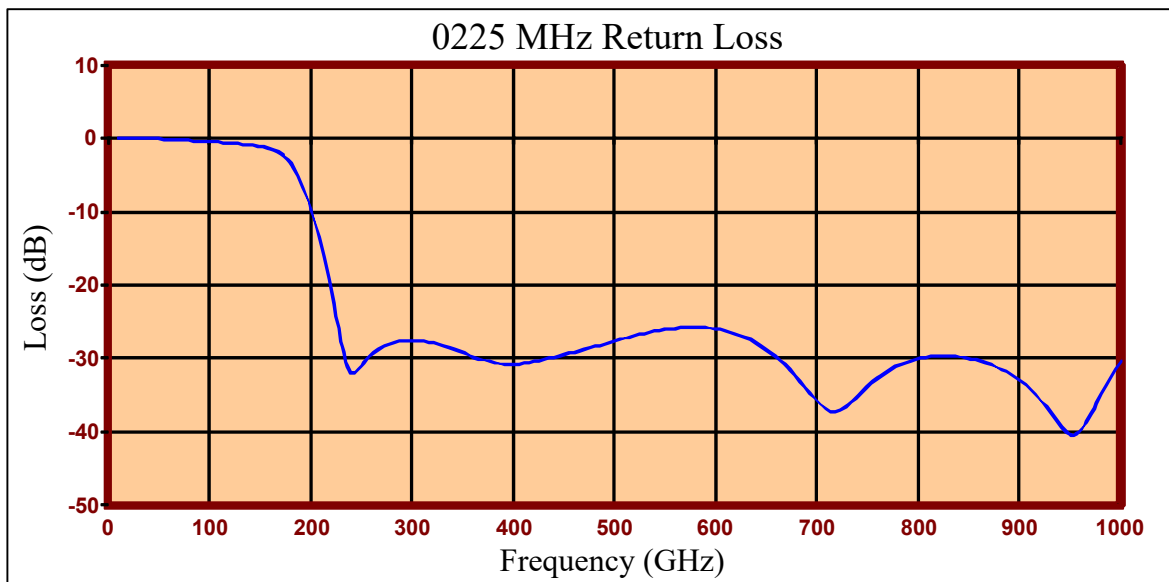
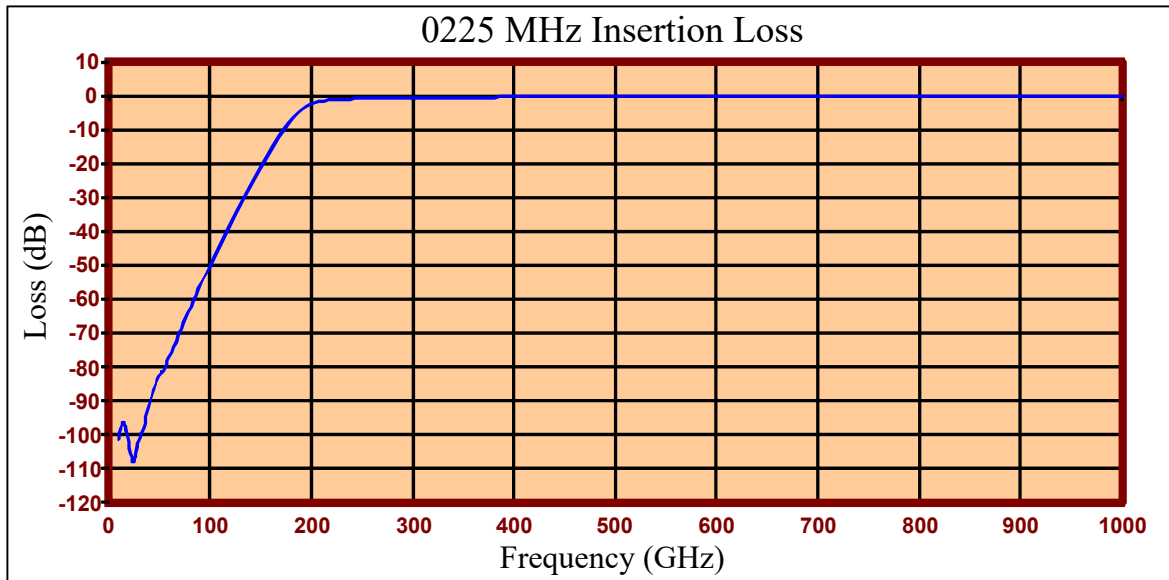
- +36dBm (4 Watts)
- Operating Temperature: -40°C to 85°C
- Storage Temperature: -55°C to 100°C



Crystek's line of High Pass Filters are designed in a rugged SMA housing. This filter line has excellent out-of-band rejection. Designed for Test Equipment and General Lab Use.

Rev B

Page 1 of 3





FREQ (MHz)	INSERTION LOSS (dB)	RETURN LOSS (dB)
10.00	-101.152	0.010
14.95	-96.058	0.006
19.90	-101.979	0.000
24.85	-107.964	-0.007
29.80	-101.593	-0.016
34.75	-97.926	-0.029
39.70	-91.494	-0.046
49.60	-82.655	-0.083
59.50	-77.190	-0.137
69.40	-70.345	-0.202
79.30	-63.611	-0.275
89.20	-56.993	-0.359
99.10	-50.614	-0.449
109.00	-44.456	-0.544
118.90	-38.464	-0.647
128.80	-32.812	-0.765
138.70	-27.318	-0.900
148.60	-22.042	-1.080
158.50	-16.977	-1.366
168.40	-12.217	-1.902
178.30	-8.015	-3.000
188.20	-4.787	-5.138
198.10	-2.785	-8.660
208.00	-1.766	-13.453
217.90	-1.288	-19.259
227.80	-1.059	-25.917
242.65	-0.861	-31.985
297.10	-0.588	-27.490
396.10	-0.381	-30.775
485.20	-0.307	-28.164
579.25	-0.267	-25.717
638.65	-0.237	-27.798
717.85	-0.213	-37.197
767.35	-0.209	-31.863
821.80	-0.196	-29.617
901.00	-0.183	-33.104
955.45	-0.181	-40.293
1000.00	-0.183	-30.374

<b>Product Control:</b>				
Crystek Part Number:	CHPFL-0225	Release Date:	20-Jun-2019	Rev B
Revision Level:	B	Responsible:	K. Piotrowicz	Page 3 of 3